

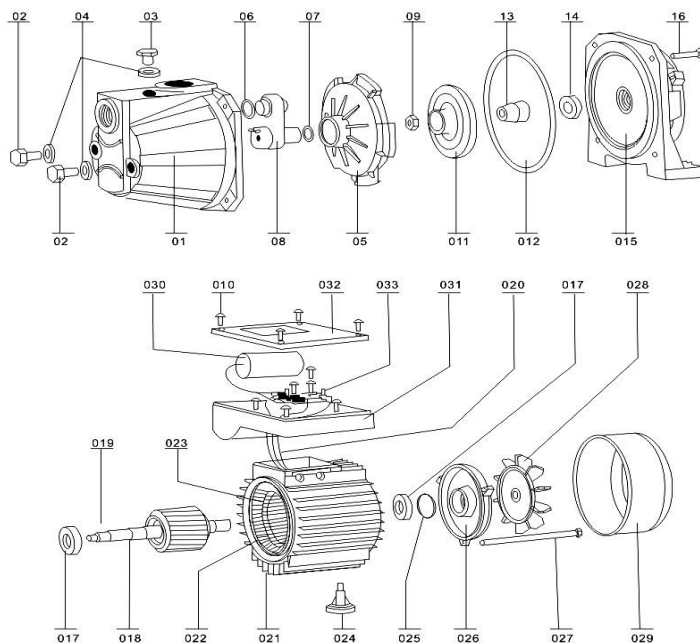
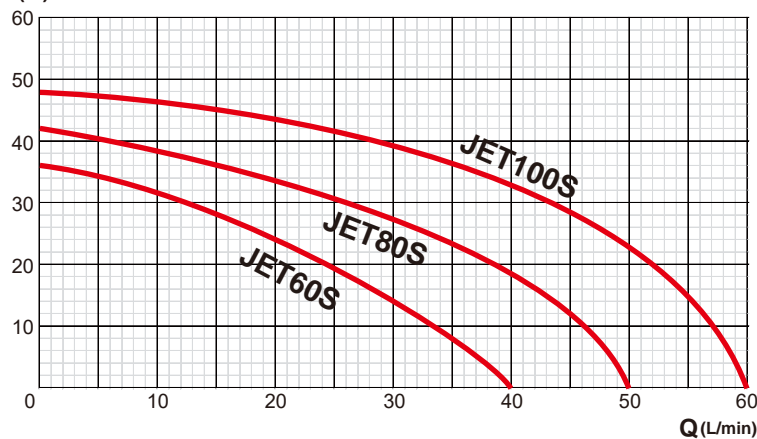
SELF-PRIMING PUMP

Self-priming Pumps are equipped with a Venturi system. They are suitable to convey clean water and non-aggressive chemical fluids, even with liquid mixed with gas, from well in continuous duty; they are also indicated to increase water pressure in centralized water systems, for small irrigation systems, for watering gardens, for washing systems with water jets, for fountains, etc. It is normally advisable to install a foot valve on the suction end.

Technical parameter

Model	Voltage	Frequency	Power		Current	H.Max	Q.Max	Size	S.Head	G.W
			kW	HP	amp	m	L/min	inch	m	kg
JET60S	110V/220V	60Hz	0.37	0.5	5.9/2.9	35	40	G1"×G1"	9	10
JET80S	110V/220V	60Hz	0.55	0.75	6.9/3.5	44	50	G1"×G1"	9	11
JET100S	110V/220V	60Hz	0.75	1	10/5.5	48	60	G1"×G1"	9	12

H(m) PERFORMANCE CHART AT $n=3450\text{min}^{-1}$



EXPLODED VIEW DRAWING - SPARE PARTS

No.	Description.	No.	Description.
1	Pump Body	18	Motor Rotor
2	Screw	19	Shaft key
3	Flit Plug Screw	20	Connection Wire
4	Seal	21	Motor Rotor
5	Diffuser	22	Stator
6	Seal	23	Stator Coil
7	Seal	24	Motor Foot
8	Nozzle	25	Spring Washer
9	Locking nut	26	Motor End cover
10	Screw	27	Long screw
11	Impeller	28	Fan
12	O ring	29	Fan Cover
13	Mechanical Seal	30	Capacitor
14	Mechanical Seal	31	Terminal box
15	Motor Front cover	32	Terminal cover
16	Screw	33	Terminal block
17	Ball Bearing		